

Rock stone-BME rough surface stones

厦光岩彩石BME型·毛面石



产品简介：

是在岩彩石AME型·光面石（第一代）产品基础上，采用高粘度水包水多彩技术，使彩色多彩颗粒硬度适中，施工后涂层外观丰满，色粒清晰。同时，通过厚质抗裂造型层达到了似与天然而胜于天然的毛面火烧石纹理质感，解决了岩彩石AME型·光面石（第一代）缺少毛面火烧石质感和涂层薄易开裂缺点。

Product features:

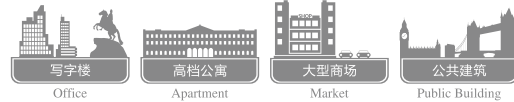
Is in the rock and stone-AME·smooth stones (first generation) products based on water in water color techniques using high viscosity, particle color colorful moderate hardness, coating appearance after construction full size clear. Meanwhile, thick crack shape layers to reach the fire stone and natural than natural hair surface texture textured, solves the rock color AME·smooth stones (first generation) lack of rough surface fire stone texture and thin coating is easy to crack faults.

性能特点：

- 毛面石、火烧石质感
- 优异的耐水性
- 附着力强
- 厚质涂层、抗开裂
- 优异的耐候性
- 纯水性，绿色环保
- 色粒非常清晰
- 无机颜料，不褪色
- 与保温匹配性好

Features:

- Rough surface stone
- Excellent water resistance
- Strong adhesion
- Crack resistance
- Excellent weatherability
- Water, green
- Color grain is very clear
- Inorganic pigments, color
- And holding a good matching



适用场所：

适用于高档商住楼、酒店、写字楼、政府工程、高层建筑等高档建筑物，非常适合外保温墙面上，以代替传统石材。

Application of places:

Suitable for high-end commercial and residential buildings, hotels, office buildings and Government projects, high-rise buildings and other high-end buildings are ideal for insulation on the walls, instead of stone.

技术参数：

基 料：氟硅聚合物乳液。
颜 色：样板、色卡或提供来样。
产 品 特 征：水溶性、多彩颗粒。
干 燥 时 间：表干6小时，重涂时间12小时，实干48小时。（温度25℃，相对湿度80%）。
理论耗漆量：0.20~0.50kg/m²，实际视基面粗糙程度、施工方法、花型不同有所差异。

Technical parameters:

Base material: fluoro silicone polymer emulsions
Color: model, color cards or provide sample
Product features: water solubility, colorful particles
Drying time: dry for 6 hours, Recoat time 12 hours work for 48 hours. (Temperature 25℃, relative humidity 80%)
Consumption of paint: 0.20-0.50kg/m², but the actual surface roughness, construction methods and designs varied.

施 工：

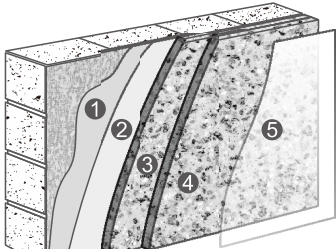
施工方法：专用喷枪喷涂。
稀释比例：不可加水稀释，无需过滤。施工时慢慢搅匀，不可机械搅拌。
施工要求：在5℃~35℃及相对湿度80%以下施工。大风、下雨等恶劣天气应避免施工。

Technical parameters:

Construction method: Special spray
Dilution ratio: Not diluted with water without filtering. Slowly stir in construction, not mechanical agitation.
Construction requirements: 5℃-35℃, relative humidity below 80% construction. Construction of wind, rain and other inclement weather should be avoided.

典型方案：（真石漆造型）

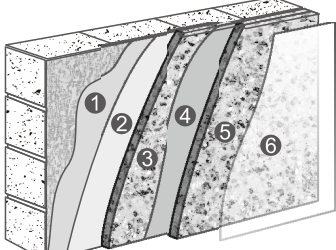
Typical scenario: (true stone paint style)



- 1 基层：厦光柔性中层腻子2道
 - 2 底层：厦光抗碱封闭底漆1道
 - 3 造型层：厦光天然真石漆2道
 - 4 主材：厦光BME主材1道
 - 5 罩面：厦光罩面涂料1道
- ① Grassroots: building flexible PuTTY for middle-level 2
② Bottom: light multi-purpose primer 1
③ Shape layers: natural really stone paint 2
④ Main material: BME main material 1
⑤ Surface: Mask face paints 1

典型方案：（砂壁状造型）

Typical scenario: (Sand texture design)



- 1 基层：厦光柔性中层腻子2道
 - 2 底层：厦光抗碱封闭底漆1道
 - 3 造型层：厦光砂壁状造型中层1道
 - 4 中涂：厦光岩彩石本色中涂1道
 - 5 主材：厦光BME岩彩石主材2道
 - 6 罩面：厦光罩面涂料1-2道
- ① Grassroots: building flexible PuTTY for middle-level 2
② Bottom: light multi-purpose primer 1
③ Shape layers: light sand texture modeling middle-level 1
④ Coating: light colored rock stones coated in solid color 1
⑤ Main material: BME light colored rock rocks the main material 2
⑥ Cover: HA mask paint 1-2 road

岩彩石与真石漆比较：

Comparison with stone paint

岩彩石优点 Stone paint	真石漆缺点 Rock stone
1、仿真度高 High degree of simulation	1、仿真度逊于岩彩石 Simulation of the inferior rock stones
2、不受原材料限制 Raw materials are not restricted	2、采用天然彩砂，受原材料限制 Using natural sand, limited raw materials
岩彩石缺点 Stone paint	真石漆优点 Rock stone
1、涂层薄，易开裂 Thin coating, easy to crack	1、涂层厚，抗开裂 Coating thickness, resistance to cracking
2、仿石质感不强 Stone-texture is not strong	2、仿石质感强烈 Stone-strong texture
3、抗冲击力差，使用寿命短 Impact resistance is poor, life is short	3、使用寿命长 Long life

岩彩石与真石漆两者结合，以各自的优点，取代各自的缺点。

Rock stones and lacquer combination to their respective advantages, to replace their disadvantages.